

Business Profile Of



BRANDING GALLERY
Quality with Commitments

A Quality Garments Manufacturers, Buying House, Importer and Exporter.

<http://www.brandinggallerybd.com>

About us

M/S. BRANDING GALLERY is a dynamic company with deep roots in the apparel industry since 2015. Our team brings garment-industry experience dating back to 2005. With the trust of our customers, the strength of our capabilities, and a robust business concept **M/S. BRANDING GALLERY** has grown into Bangladesh's premier sourcing organization. Our office is in Chattogram to leverage proximity to the port for faster delivery and lower production costs, while we also source from Dhaka and Comilla EPZs in addition to Chattogram. We pride ourselves on a highly skilled workforce with extensive knowledge of garment technology.

What We Do:

We provide end to end manufacturing and sourcing for readymade garments across men's, women's and children's wear as well as infants. Our Portfolio includes shirts, trousers, shorts, jackets, blouses, under-wears, polo shirts, tank tops, vest including all denim and non-denim products. We also handle all standard finishes – printing, embroidery, washing and garment dying perfectly.



Our Services

FABRIC & RAW MATERIALS SOURCING
MOCKUP, PROTO, PHOTOSHOOT, SMS, FIT, PP, SIZESET, TOP & SHIPMENT SAMPLING
FACTORY SOURCING
QUALITY ASSURANCE
COMPLIANCE & AUDIT (SOCIAL, TECHNICAL & C-TPAT)
INSPECTION & TESTING
LOGISTIC SUPPORT, ESSEL / SHIPMENT BOOKING



Fabric & Trims Sourcing

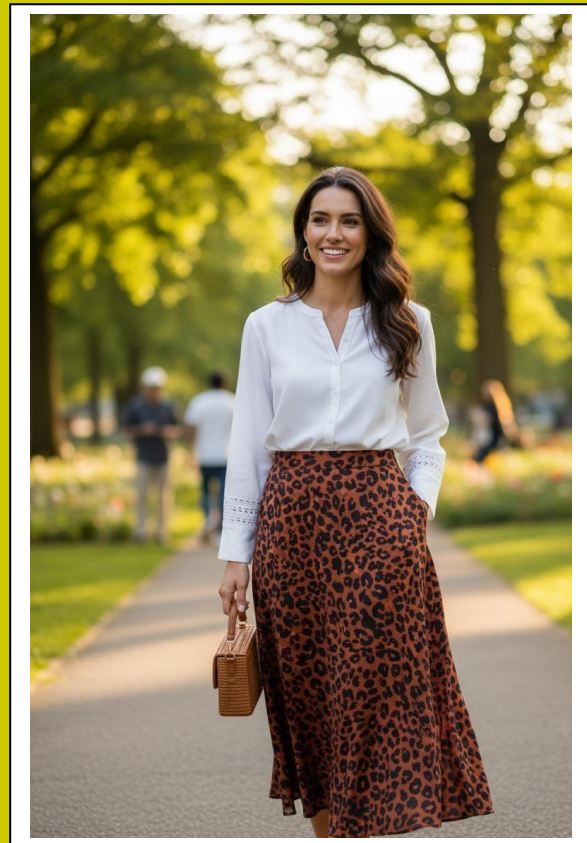
Our fabric and trims sourcing matrix spans from local suppliers to global partners in China, India, Pakistan and more. All suppliers are approved by multiple brands and offering a wide range of fashion, outerwear, functional, workwear and recycled fabrics, plus a comprehensive set of trims for diverse product needs.

Fashion fabrics: include Tencel, Modal, Organza, Lustrine, microfiber faille, Clipped jacquard chiffon, PSV panel, Viscos, Linen, Corduroy, Cotton Poly Spandex, YD Fab, Corduroy, Twill, Canvas, Oxford, Sateen, Velvet, Suede, Faux Fur, Sherpa-Bonded, nylon, polyester spandex, bamboo cotton, Rayon, AOP etc.

Outerwear fabrics: include Taslon, Fake Memory, Pongee Bronze, Ripstop TPU bonded, Polyester, Nylon, Nylon coated, , Taffeta, Mesh, Micro Fiber, Pongee, parka fabric, tunnel fabric for down coat, channel fabric for down jacket, mountaineering fabric and Softshell fabric.

Functional fabrics: cover Air Permeability & Moisture-wicking and Quick-drying, Odor resistance, Thermoregulation, Anti-wrinkle, Antimicrobial and deodorizing, UV-protective, Flame-retardant, Water-repellent, Anti-static, Graphene Fabric etc.

Trims: We source all type of labels, tags, buttons, elastics, belt, stickers, zipper, puller, pompom, Heat transfer, Sticker, rubber & silicon Patches. Stopper, Buckles, Rivet, reflective tapes, seam-sealing tapes, drawcord, lingerie items like molded foam cup, adjuster, slider, ribbon, satin bows, hanger with sizer etc.



Our strength

- On-Time Delivery (OTD): Proven track record of on-time deliveries.
- Skilled Workforce: All employees are well trained and bring extensive experience.
- Sustainability: Commitment to sourcing sustainable products.
- Strong Network: Mills, suppliers, factories, shipping lines, customs, bonds, and banks.
- Quality Standards & Procedures: Maintained high-quality standards and robust processes.
- Flexible payment Terms: TT or LC

LC Terms:

- Documentary credit must be irrevocable and transferable.
- It must be available at any bank.
- Include the central bank's required B/L notation: "Full clean on board ocean bill of lading made out to the order of negotiating bank in Bangladesh, endorsed to the order of your bank, notify yourself..."
- Since all goods transit through Singapore or Colombo, transshipment must be allowed.
- Documents must be presented within 21 days from the LC issue date.

Delivery Terms:

- FOB Chittagong sea port or Dhaka Airport, C&F or CIF by sea or air. Timing terms are based on the date of reception of your L/C.

Sampling support :

Proto/ Development Sample:

Buyer or product development person should issue styles to tech design by group. Technical design does create style with sketches, qty, bom , paf (proto approval form), qty, if necessary to be more detail as possible. Development samples should be reviewed as a first priority once samples are received. After development sample approved, buyer will issue the PO sheet.

Fit Sample:

When an initial spec has been developed to go straight into a fit sample, this sample will be considered the start of the fit process. It should be treated as a 1st fit sample. This sample can be in substitute fabric as close as possible to the real fabric, and alternate trims. Any original sample buyer may ask and we will return the sample. This sample must be tag with complete info regarding fabric quality , trim , label, wash comment , yarn info. Style modification may be requested by the buyer during the first fitting. 1st fit and design comments will be applied to all salesmen's samples as well as 2st fit samples or 3rd fit if required.

Salesman sample (SMS)

SMS sample is labeled with style code, actual fabric composition, actual trims , instructed labels, tags, stickers and packing . SMS Samples are shipped with a technical spec sheet and buyer instructed packing list.

Pre-Production Sample (PPS): The buyer will request PPs upon final fit approval. PP sample is made completely according to the buyer's requirements and is manufactured with actual fabrics, accessories, and specified techniques, e.g. printing, and embroidery. It is used to confirm all the details, features, and quality of the product.

Production (TOP's) and Size Runs Sample :

We verify full size set samples, ensuring each size meets spec and fits correctly prior to bulk cutting.

During the early stage of production, we randomly select garments for quality inspection and send samples to the buyer in the specified sizes and colors for TOP sample reference.

Shipment sample:

After mass production begins, our technical department immediately arranges a production sample for the buyer as quickly as possible. Concurrently, the shipment sample is tracked and followed up. Before cutting the production and shipping samples, our QC thoroughly inspects the surface, trims and accessories (including all labels, tags and price sticker conform) to ensure that samples from all parties meet the required workmanship and measurements.

GPT and FPT Sample/ Report: We also coordinate garment and fabric testing, ensuring samples are submitted to the buyer's designated lab according to specified testing parameters.

Quality & Product Safety :

M/S. BRANDING GALLERY is founded on a commitment to excellence and uncompromising quality. Each of our cooperative factories operates with robust internal quality control systems that meticulously oversee every stage from development to finish product. Our quality team excels in piece goods inspection and AQL-level 1.5/2.5/4.0 checks tailored to customer requirements. The following quality assurance procedures are implemented:

Fabric Inspection: We use standard inspection systems (4-point /10-point, or ISO-based) for fabric inspection. We verify fabric/yarn flaws, yarn contamination, pilling, slubs, surface holes, incorrect weight GSM, color bleeding or staining, uneven dying, finishing-creases, misprints on fabric, bowing of fabric or mismatch of stripes , colorfastness, dye lot control: shade band, panel, shade card, etc. and also check all fabric inspection and inventory report.

Trims inspection:

- Labels--raveling, fraying, or damaged, not to specification, off shade standard, or missing, incorrectly applied, or insecure wrong labels.
- All rigid components (e.g., metal parts, buttons, Zipper) must be free of sharp edges or points, and all corners must be smoothly rounded.
- UPC's Price Tickets, Hangtags, Pocket Flashers, Merchandising Tags etc.: missing, damaged, incorrect, insecure, or applied incorrectly, -application causing damage to the garment.
- Polybags: as per approved standard (thickness, warning information, too big/small affecting presentation or creating creases and bruising to the garment.
- Cartons: incorrect carton standard (paper quality, incorrect ply/thickness), busted or damaged, over max. weight allowance, missing carton labels, missing special stickers (seconds/non-conforming/special customer, etc.) applicable, quantity incorrect as directed per the carton label, contents/ carton labels do not match packing list, incorrect or no shipping marks, incorrectly packed (size/color/units), no security tape on top / bottom / sides of carton.
- Also check Trims inspection& inventory Report.

Fabric Relaxation: All knitted and stretch (including woven) fabrics are unrolled and relaxed for 24–36 hours prior to spreading, with an additional 6 hours after spreading to prevent tension reintroduction.

Fabric Shrinkage/Elongation Testing: Shrinkage tests are performed post-iron or post-wash per standard, and patterns are adjusted accordingly.

Fusing Control: Key factors—pressure, timing, and temperature—are recorded for each fusing operation, with written records maintained for each machine at least three times daily.

Machine Cleanliness and Maintenance: We inspect each sewing machine every morning before production starts and the end. Workers sanitize hands and workstations according to our SOPs. We monitor for oil leaks by placing blotting paper or fabric under the presser foot. We verify with a magnet that there are no stray extra needles inside the machines.

Quality & Product Safety :

Attachments and Embellishment (Beads, Heat-seal, Print, Embroidery, Applique, Badge) :

- Shank, Snaps, Buttons are tested for strength and movement per buyer specs or internal standards (15-second pull test at 93.4N/ 9.52 Kgs/21 LBS). Non-conforming items are rejected, and each style is tested on 20 units, three times daily, with full documentation for traceability. Also these must be attached using correct mold.
- Plastic Buttons must be durable (no cracking, chipping, or breaking), attached using lock stitch machines, with at least 15 needle passes for 2-hole and 24 for 4-hole buttons.
- Appliqués and other similar decorations must be securely stitched or bar-tacked with reinforcement.
- All embroidery should be backed to avoid sharp surfaces on the inside of the garment, and improper removal of embroidery backing that creates distortion.
- Heat-seal sticker screen print test on a scrap fabric using the correct heat, pressure, and time to ensure the label is securely bonded.
- Also check heat seal. Print color bleeding, out of registration, poor coverage & hand feel, sticky, breaking, or cracking, not correct to specification, misplaced, out of tolerance, or tilted and then subject to wash and durability tests.
- Check embellishments are correct size, shape, or color, hoop marks, poor or incorrect tension.

Bulk Marker Check: Before production begins, we verify pattern accuracy, fabric cut direction/alignment per instructions, and maintain high material efficiency.

Fabric cutting Process: At the start of bulk fabric cutting, we ensure the cutting direction aligns correctly and the lay height is adjusted according to the fabric's characteristics. If shading or other issues are identified, we confirm the full marker with the factory before proceeding. Additionally, we verify that the cutting machines have sharp bend knives and that operators are equipped with protective gloves.

Cut Panel Inspection: Our QC monitors the cut panel/bundle for shade consistency and defect-free condition before bulk starts. We pay extra attention to all stripes and check fabric cut panel so that there is no issue on stripe and check matching garments. Cut blocks are inspected and recorded per the cutting component replacement report. Any defective components are replaced immediately and removed from the production layer.

Pre-Production Meeting (PPM):

- Pre-production QC briefing: review of tech packs, workmanship, measurements & fittings, fabrics and trims quality, cutting ratios, and finish requirements across cutting, quality, production, and finishing (with all supervisor-manager).
- Shrinkage/elongation differences between garment and fabric are expected, so this step is essential.
- We document and test both washed and unwashed garments, before and after processing.

Quality & Product Safety :

Production Checklist / Pilot Run:

- After trial cutting, we verify sizing and fit against the approved sample, review pattern and adjustment history, and conduct risk analysis on critical operations.
- SPI check, label accuracy and placement, thread shade, strength, and count according to fabric construction.
- Stretch tests for elastic fabrics and straps; visual inspections for accessory non-conformances; buttonhole tests; proper folding and packing; embellishment approval (emboss, print, rhinestones); compliance with approved wash standards.

During Production Check (DUPRO): we recommend a traffic-light system. Inline QCs should visit each sewer at least twice daily to review performance and inspect at least one bundle (no fewer than 12 pieces) per sewer. Based on defects observed, the inline QC will assign a color grade to the sewer: green for satisfactory, amber/orange for marginal, and red for poor. All assessments must be documented, with follow-up actions recorded by the supervisors.

Construction and Stitching: thread color, type, or size incorrect, tight or loose tension, skipped or broken stitches, needle chews, picks or cuts, run off stitches, stitch ends not secured, tied in, backstitched or tacked, twisted, puckered, or pleated seams, irregular or uneven stitch margins, poor stitch repairs and resewn repairs that affect appearance, raw or open seams, missing or misplaced bar tacks, button hole incorrect, mismatched plaid or stripes affecting appearance, twisted or torque body, stitch count incorrect per standard.

In-line inspection process: The sample size is determined by batch or lot size, with acceptance criteria based on the required AQL level (as specified by the buyer). Garments are evaluated for conformance to size and appearance specifications. Defects are clearly marked / stickered to facilitate on-floor identification of rejected pieces. Observations are documented in an End-Line Inspection Report, which notifies the production line supervisor. The supervisor coordinates rework on the affected items. After rectification, the pieces undergo a re-inspection to confirm quality.

Before-and-after wash inspection: evaluate garment integrity and appearance. Key focus areas include: Shade and Hand feel, shrinkage, distortion, seam integrity and quality, interlinings, fabric surface effects, elasticity, trims colorfastness, and print integrity, strong smelling garments due to excessive chemical treatment, poor rinsing or mild, bleach or dye marks, streaks, excessive sand, residue's, resin, etc.

Quality & Product Safety

Finishing Check:

- Distorted garments due to pressing or finishing,
- Burned, scorched, or shiny press marks, under or over pressed,
- Teflon-shoe ironing may reduce surface shine and transfer marks,
- Finishing not to approved standard- hand feel, holes, shade, presentation,
- Excessive fraying or pilling,
- Shading within or from garment to garment,
- Residue from cleaning chemicals,
- Corroded or discolored hardware/closures due to finishing process,
- Incorrect fold or fold size affecting presentation.

Cleanliness Check

- loose threads or untrimmed thread tails,
- stains, soil, spots, or debris from manufacturing process,
- chalk, pen or pencil marks,
- tape or seconds stickers on garments.

Non-Wash Garments:

The use of magic pens and other non-removable chalk marks is strictly prohibited for non-wash garment orders. Only our recommended chalk products may be used. All marking tools must be invisible to the surface, and any markings made with pencil or chalk should be light and easily erasable on a daily basis.

Metal Control Requirements:

Implement Sharp Tools Control and Replacement Records by securely fastening scissors, numbering all scissors and pens, prohibiting metal pins/wires/staples for bundling, and ensuring all hard parts have no sharp edges—rounded corners only.

The Broken Needle Policy (Machine) :

- (1) needle entitlement per machine, with full needle return on initial implementation;
- (2) a designated collector on each line and a documented search protocol for missing needle parts, including potential garment destruction if unrecoverable;
- (3) approved reissuance only after verification; and Needle Logs available for TSCL QC review.

Quality & Product Safety

The Broken Needle Policy (Operator): The policy requires exact needle check-out at shift start, no extra needles at the workstation, mandatory check-in at shift end, and full production inspection if any needle is missing, with the day's production held in rejection until the needle is located.

Metal Detection Policy :

- Global scope: 100% metal detection is required for all Japan orders. For Europe, USA, and Canada orders, 100% metal detection is required for all children's garments.
- Process: Metal detectors must be used before boxing the garments. Complete a Metal Detection Log at the factory, and retain it in Corporate QC for a minimum of 3 years.
- Equipment and operation: A conveyor-type metal detector is mandatory. Follow the manufacturer's instructions for all aspects of use, including calibration. Machine operators must be trained by the manufacturer, and training documents must be on file.
- Calibration: TSCL standard for calibration is a 1.2 mm ferrous card.
- Records retention: Keep calibration records for 6 months to 1 year. Maintain metal detection records for all detected styles for a minimum of 6 months to 1 year.

Pre-Final Inspection/ /Pre-Shipment Inspection (PSI): PSI is conducted after production is completed and approximately 80% of goods are packed. This inspection verifies that finished products conform to the buyer's specifications and quality requirements before shipment.

Final Inspection (FI) / Final Random Inspection : conduct 100% inspection for piece goods or perform a final random inspection according to the AQL level (Buyer standard). Includes quantity and packaging check, moisture test, product conformity, on-site testing, visual inspection, measurement and workmanship checks, and safety verification. Additionally, we provide complete lab test reports for fabric, trims, and garments, ensuring all parameters meet the buyer's specified standards.

Printing, Washing & Dyeing Services

M/S. BRANDING GALLERY maintains relationships with a diverse network of washing mills and printing factories capable of a wide range of treatments, including vintage wash, cloud wash, softener wash, acid wash, plus diverse garment-dyeing options.



- Rubber Printing
- Plastisol Printing
- Heat Transfer Print
- Glitter Print
- Metallic Print
- Foil Print
- Puff Print
- Flock Print
- Sublimation Print



- Rinse (Garments Wash)
- Pigment wash
- Caustic Wash
- Enzyme
- Enzyme + Stone
- Enzyme + Bleach
- Towel + Bleach
- Acid
- Tie (Watermark)



- Garments Dye / Overdyeing
- Pigment
- Reactive
- Fluorescent
- Acid Over
- Tinting



- Hand Brush
- Whisker
- Grinding
- Destroy
- Tacking
- Wrinkle (Crinkle)
- 3D & PP Spray
- Laser

Sustainable Sourcing Practices

M/S. BRANDING GALLERY is advancing sustainable sourcing across the supply chain:

- Ethical and environmentally responsible procurement of raw materials.
- Sustainable and ethical manufacturing practices.
- Encouragement of factories to adopt sustainable energy practices, including renewable energy and energy-efficient technologies.
- Eco-friendly distribution, sustainable packaging, and efficient supply chain management.
- Lower water usage and reduced waste generation.
- Responsible production facilities that pay fair wages.



Our Cooperative Factories

M/S. BRANDING GALLERY partners with factories certified by multiple internationally recognized organizations, as illustrated. Our unwavering commitment to worker safety has earned us 100% certification with the RMG Sustainability Council (Accord) and Nirapon (Alliance), reflecting our adherence to rigorous global standards.



We are dedicated to upholding social and ethical responsibility, including rigorous fire-safety standards, to protect worker rights, promote fair labor practices, and maintain a secure, healthy workplace.

Company Overview

Corporate Office:

M/S. BRANDING GALLERY ,
Shwapna Bilash, Flat # 4/A,
Gulshan Housing, Baizid,
Chattogram-4200,
Bangladesh.

Bank Details:

ONE Bank PLC.
Agrabad Branch, Chattogram.
A/C Name : M/S. BRANDING GALLERY
A/C NO : 104***** ***1
Swift Code : ONEBBDH002
Total Employee: 8 Persons
Annual Turnover: US\$ 5 MILLION
BIN # 006203344-0504

HONOURABLE CUSTOMERS :

- SKIVA INTERNATIONAL INC (NY, USA)
- CHILLIPOP APPARELS (NY, USA)
- PIAZZA ITALIA VIA SKYTEX GROUP (CHINA)
- CASA HERMOSA (ROMANIA)
- YM INC (CANADA) VIA EVER (HK) LTD, CHINA
- MODDO (POLAND) VIA EVER (HK) LTD, CHINA

Authorized by :



THE CHITTAGONG CHAMBER
OF COMMERCE & INDUSTRY

CERTIFICATE NO.
M/GEN/36/ 0016420



CERTIFICATE OF INCORPORATION
NO. CHP-4227/2024



VAT / BIN NO. 006203344-0504



DEPT. OF TEXTILE REG NO.
24.02.0000.004.99.292-24



EXPORT LICENSE NO. 260315210341824



TRAD/CHTG/024843/2023

Our Valuable Brands :

FAMILY DOLLAR

FASHION NOVA

NOVAKids

pink woman

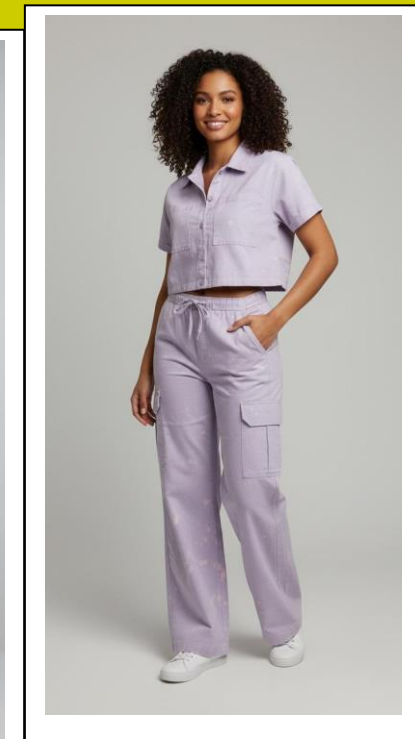
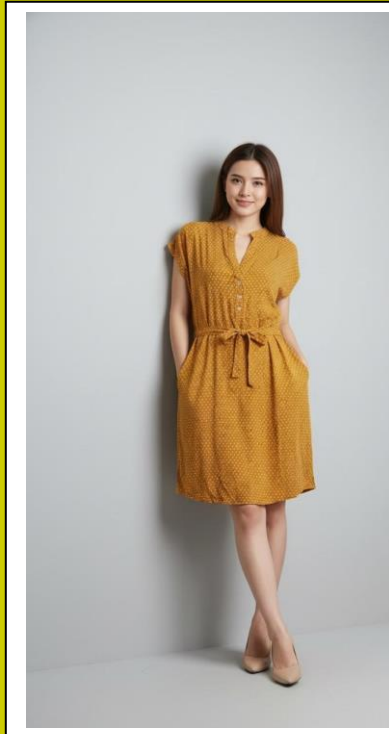
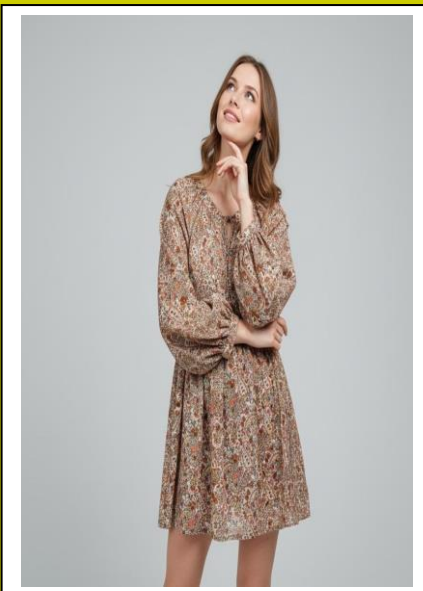
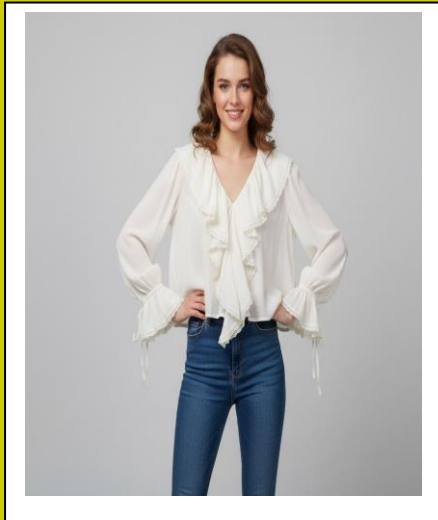
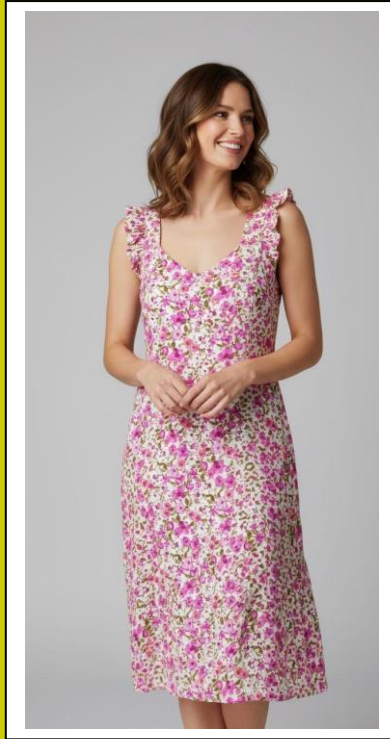
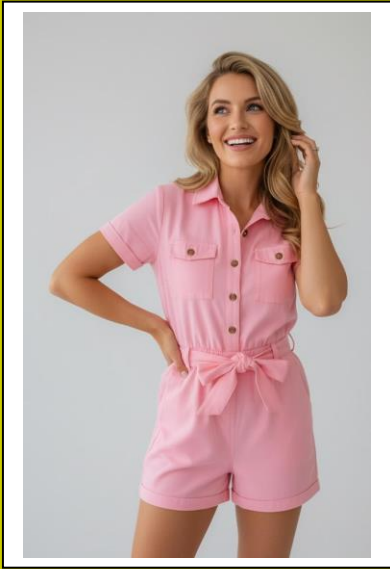


Allie.

Clothing Co.



Ladies Wears Product Catalogue:



Trouser



Shorts



Polo



Shirt



Swimwear



Jogger



T-Shirt



Pullover



Denim



More Denim



Outerwear



Windbreaker, Parka



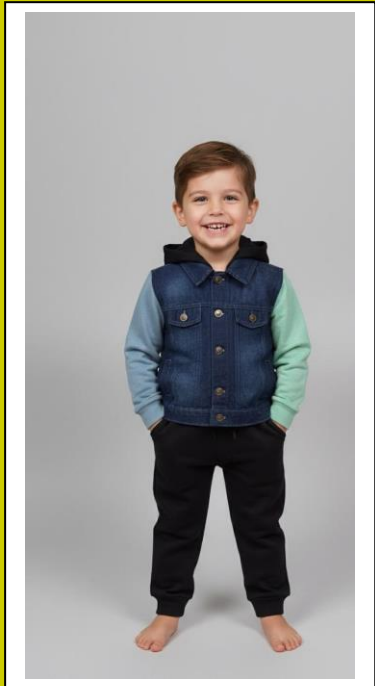
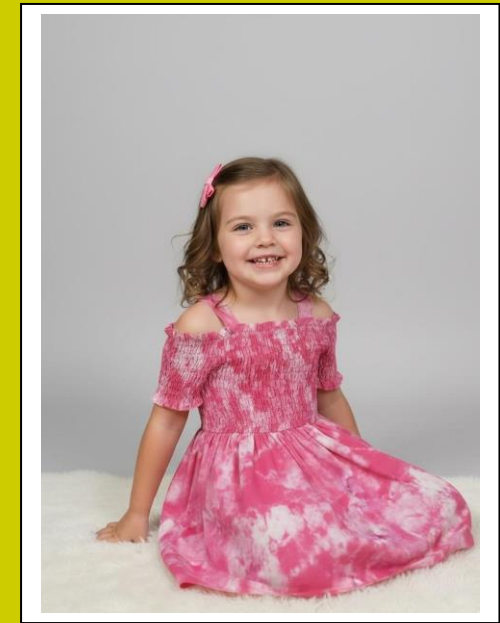
Overcoat, Leather



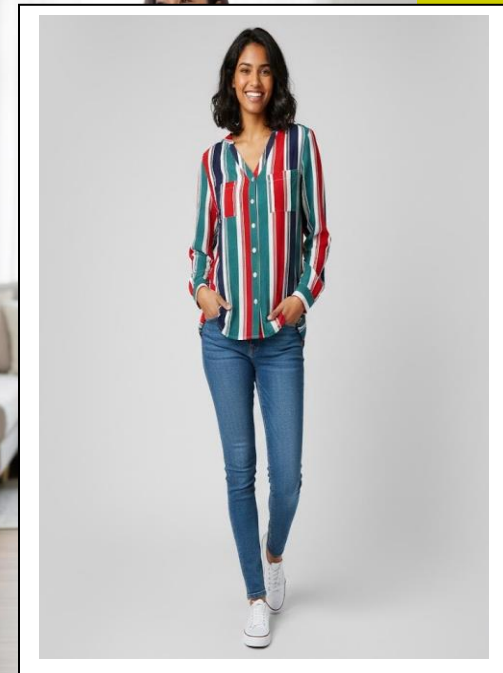
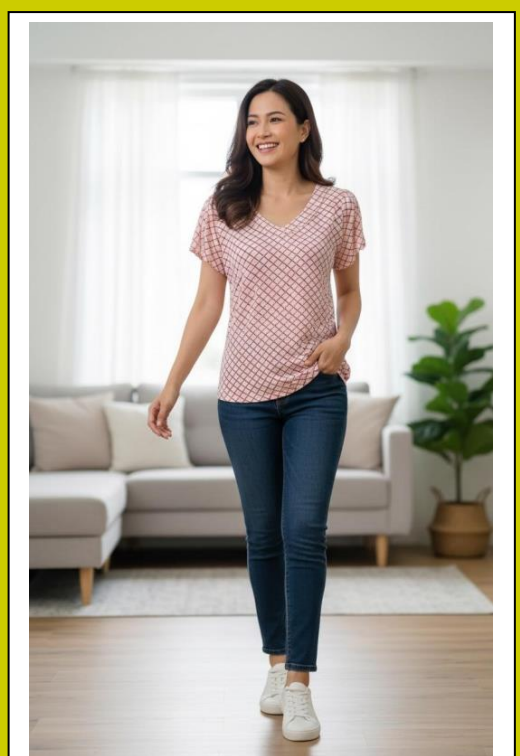
Sportswear, Activewear



Kids Wear Catalogue :



Dresses, Blouses



Lingerie



Sleepwear, Loungewear



Uniforms, Safety & Workwear



Apron, Cap & Handicrafts



CONTACT US

Sheikh Md. Aman Bangali

Managing Partner

Cell:+8801819332828

aman@brandinggallerybd.com

Md. Shafiqul Alam Parvez

Marketing Partner

Cell:+8801880957664

parvez@brandinggallerybd.com

Md. Masudur Rahman

Marketing Partner

Cell:+8801818791021

masud@brandinggallerybd.com

General Inquiry :

aman@brandinggallerybd.com

Thank you

